



The Annual General Meeting, 24th April, 2019



Agenda

- Welcome, introducing the committee and approval 2018 minutes
- Statement of accounts for 2018
- Re-election of committee members
- Introduction of Chris Rhodes, Head Teacher of Grey Court School
- Highlights of 2018/19
- Gordon Elsdon, Local Historical Detective: “The Untold Story of Ham and Petersham”
- President’s address: Rachel Lipscomb
- Looking forward to the coming year
- Proposed amalgamation with the Ham Amenities Group
- Any other business and questions from the floor
- Drinks



Election of Committee

- Mrs Jo Chambers
- Mrs Pauline Gizejewski
- Mrs Claire Mackenzie
- Mrs Anne Powell



Chris Rhodes, Head Teacher





Ham Pond,
Spring Clean
and Ham
Avenues





Toad Ponds yet to attract amorous toads with improvements needed.

Another pond planned.

More sensitive woodland management of Ham Common Woods.

Latchmere Brook now well established





Petersham Open Gardens, Petersham Common Woods and Cows



**Petersham Common Woods Walk
10am Saturday 9th March**



Local and the Neighbourhood Plans



HAM & PETERSHAM
Neighbourhood
Forum



Improving Conservation Areas



Did You See no 1 Upper Ham Road Being Demolished?



St Michael's Convent





St Andrew's Church and Remembrance Services



Remembered
41 Men of Ham
and their Families

Local stories for the
Centenary of WWI
Evening of 10th Nov 2018
St Andrew's Church

St Andrew's
HAM COMMON



Ham & Petersham

The Untold Story



**Ham Open Gardens
19th May
Come and Visit**



**LONDON IN
BLOOM** 

A CAPITAL CAMPAIGN

Rachel Lipscomb
President



Looking Forward

- Cassel Hospital Garden
- Duchess of Teck
- Fighting Graffiti and anti social behaviour
- Thames Bridge and Ham Close
- Revised management plans for our green spaces
- German School and Ham Polo
- Replanting lost trees
- Summer Party 2019
- Joint working – Tow path clean, Ham Lands, |



Cassel Hospital Garden. Duchess of Teck



Fighting Graffiti and Anti Social Behaviour



Thames Bridge Consultation.

Ham Close Uplift

Good homes with improvements to health, social, transport, youth and school provisions while without compromising the area's character

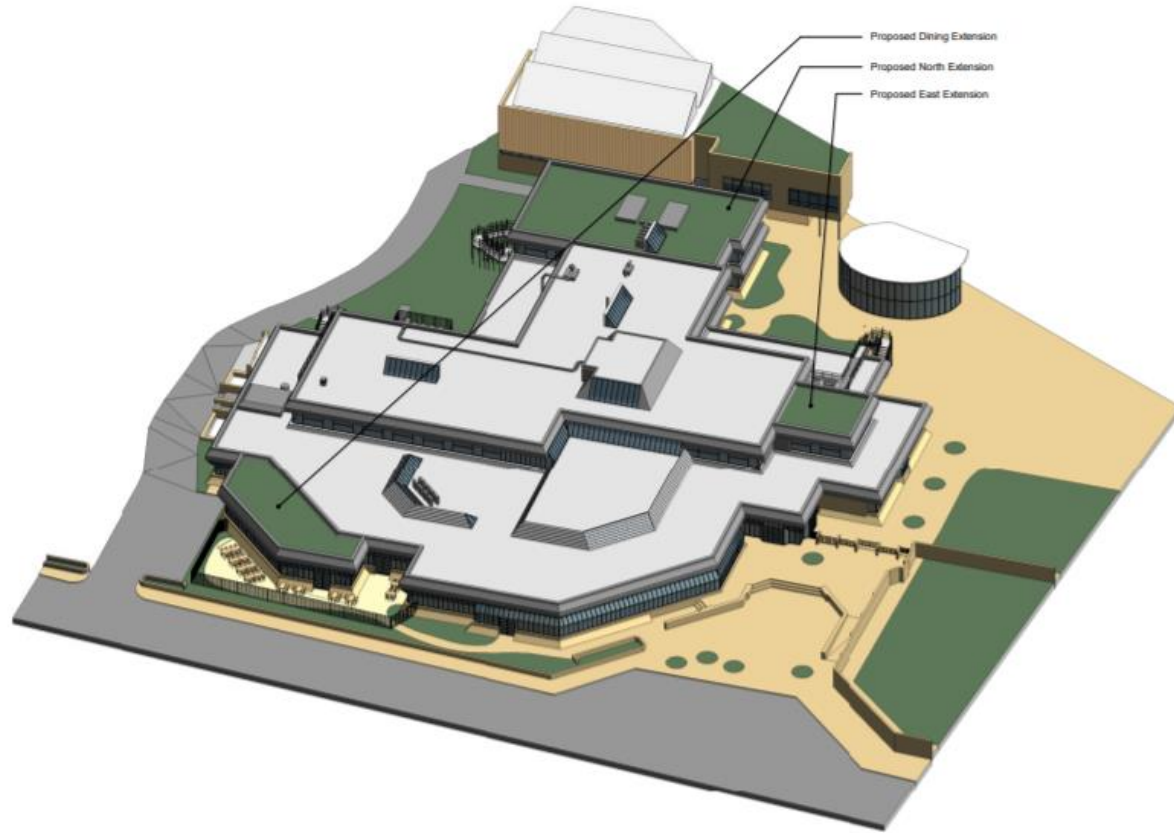


Trees, Paths and Green Spaces

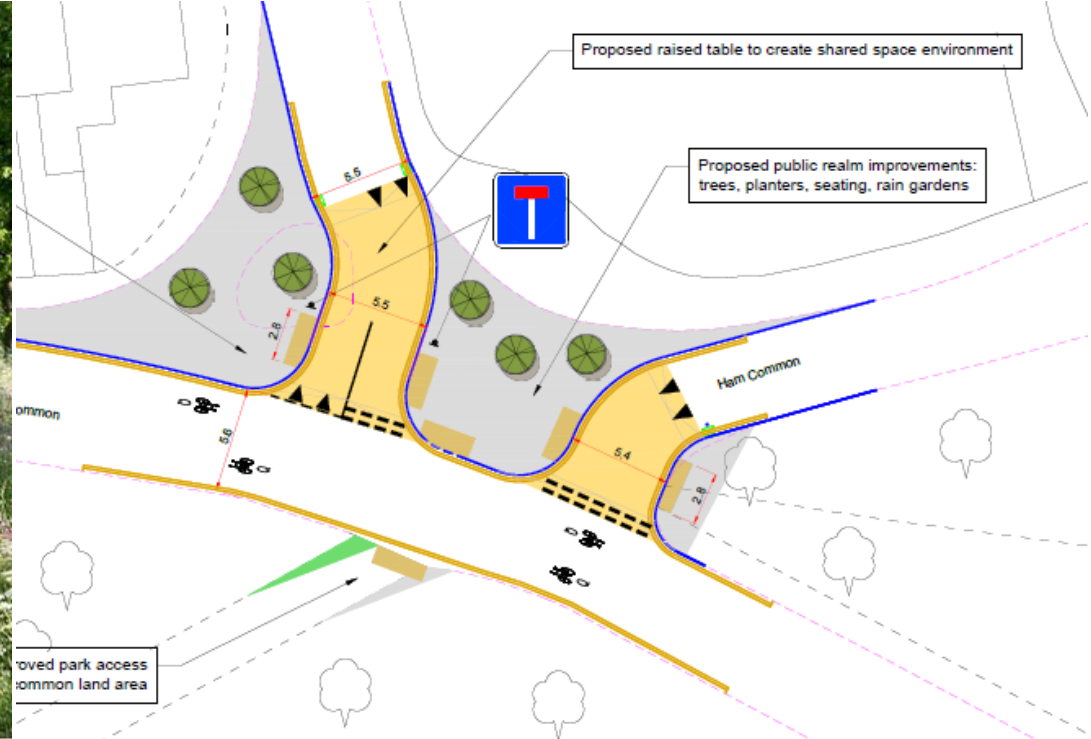
- Revised management plans for our green spaces
- Improve paths
- Manage trees



German School and Ham Polo



Cycling and 20MPH





Summer Party 2019
Garden of Elm Lodge, 7.30pm, 8th June



**Join the
Great British
Spring Clean**

Be part of the pick

10am 30th March
Meet at Ham Pond
#GBSpringClean



Joint Working

Proposed Amalgamation With the Ham Amenities Group



We Agree to HPA Committee Working Towards the Amalgamation
with HAG and Setting Up of Charitable Incorporated Organisation

Questions From The Floor

