



Ham & Petersham Association Annual General Meeting 2018

Best Village in London

Quotes from the judge

“I met representatives from the various groups that make up this **unique London village.**”

“the **rural character has been preserved** to the present day. It is charming and a very much sought after area to live in.”

“A village green, an allotment, a playground and an historical house (Ham house in this instance) is probably to be expected; but an **abundance of forests and meadows** surrounding it less so.”

“succeeded in getting the many groups together and consulting schools, businesses, and faith groups, the way forward in working with, and influencing Richmond Council on future plans for the village”





The Avenues and the Copse need ongoing management and care



Ham Pond
volunteer
support.
Concern for
our chestnut
trees on the
Common



Latchmere Brook, Ham
Common Woods and the
toad ponds all add to the
local biodiversity



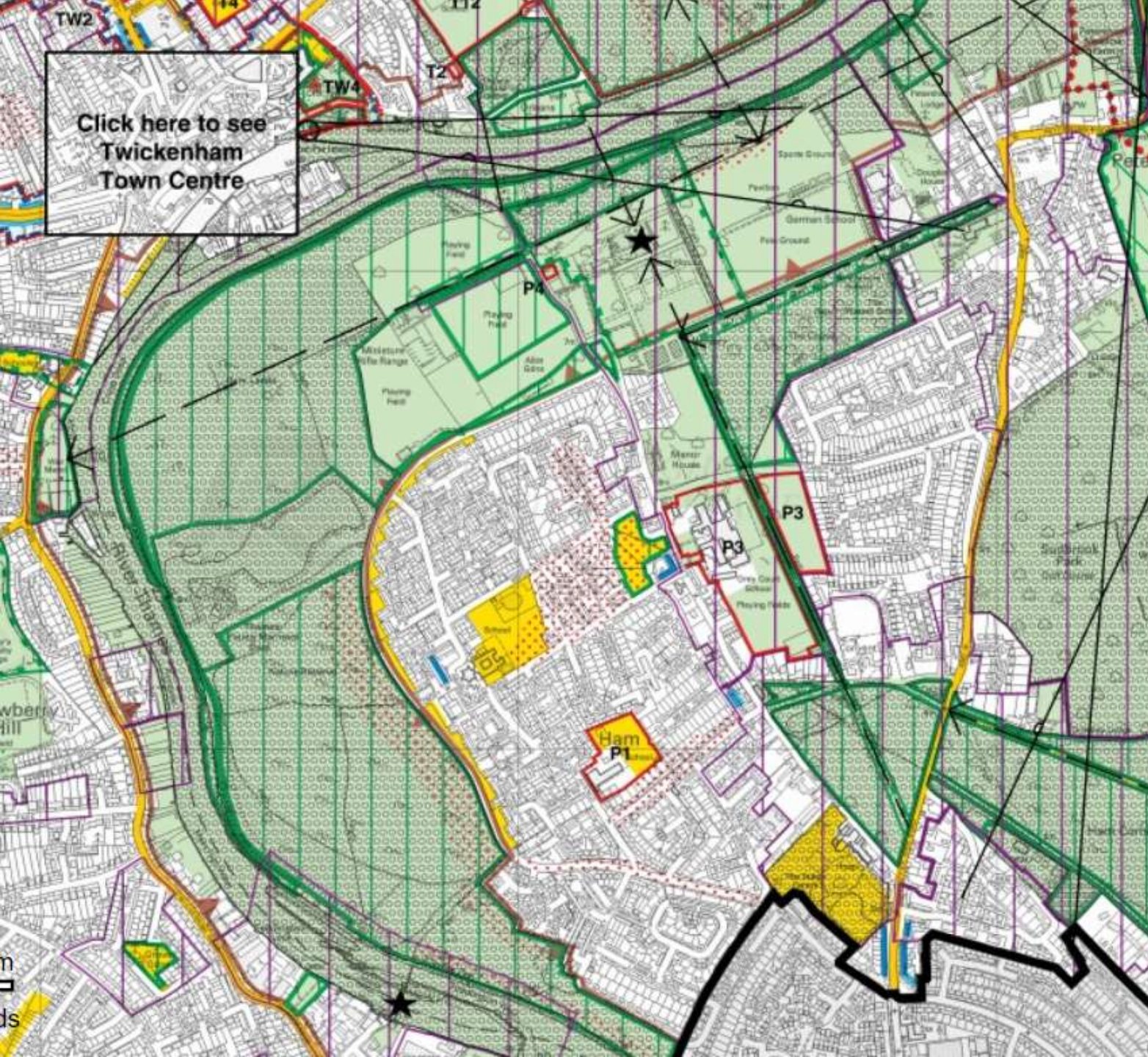


7000+ bulbs
Planted. Lots
of paths laid



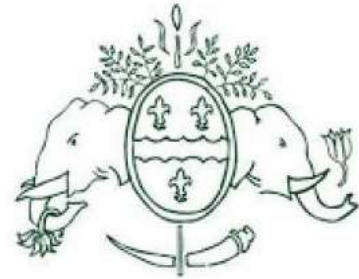
The Russell School development has not been easy one for parents or neighbours. Our priorities have always been giving children the best environment to learn in within the local community. We will continue to monitor the development and that of the Strathmore site.





Preserving Our Green Spaces: Tiers of Planning Protection

Much of Ham and Petersham are protected by designations; Metropolitan Open Land, Other Open land of Townscape Importance, Other Site of Nature Importance, Conservation area, SSI and Listing all protect land. We will continue to seek to restrict development within these areas.



Petersham Nurseries





Ham Parade and the Market

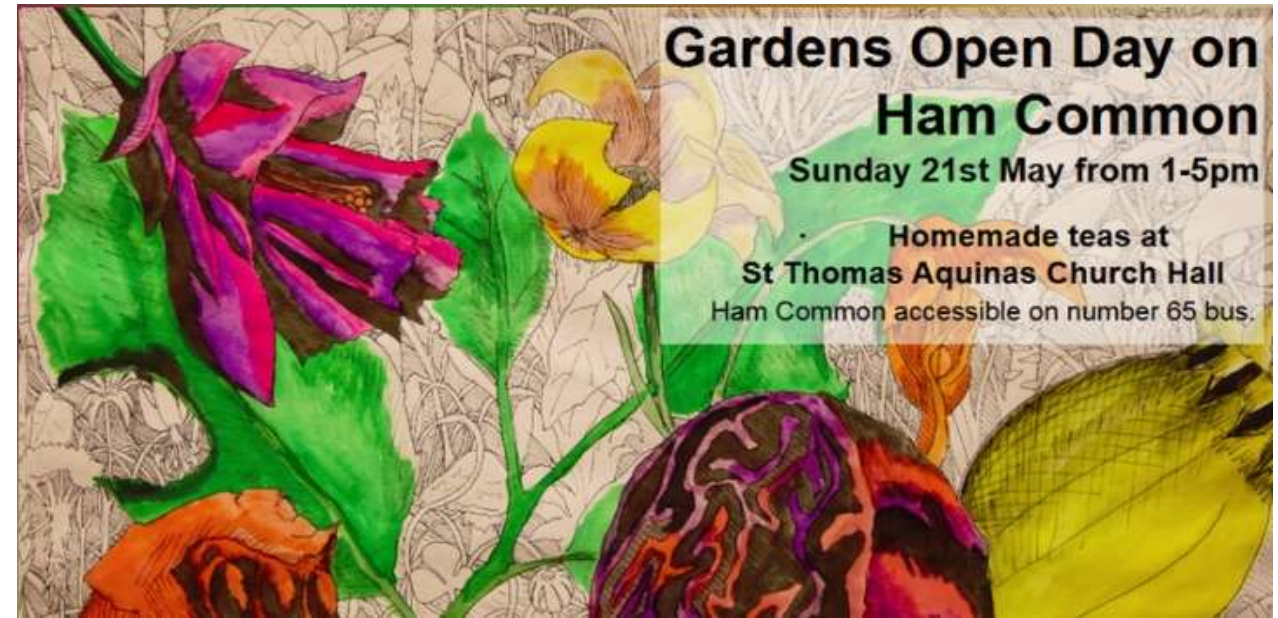
Set up a weekly 'mini-market' of about three key stalls such as a greengrocers, cheese stall and butchers.

Work with independent traders to improve their sales. Improve the Parade's visual experience.

Looking to buy a property on the Parade as a community shop.



Ham Open Gardens was a huge success with over £10000 raised. More than 1000 visitors enjoyed 21 gardens.



Special thanks to the 50 stewards, Thomas Aquinas, Homestart, cake bakers the host gardens, and the children of Grey Court and Marymount Schools for their help.



Richard Woolf
McDaniel Woolf Architects



Britain in Bloom
Finalists 2018



Royal Horticultural Society

Sharing the best in Gardening

Having an approved Neighbourhood Plan will:

1. Conserve and enhance the distinctive character and heritage of our area including our beautiful green spaces;
2. Keep Ham and Petersham as a mixed community, something that our consultation has shown is valued by residents;
3. Foster the future success of all of our local shopping areas;
4. Direct future development to fit in with the existing infrastructure and architecture, and to be built to high quality standards with the best environmental considerations;
5. Support walking, cycling and active travel for all, in a safe and welcoming environment to reduce congestion and improve air quality;
6. Increase the amount of money our area receives from developers operating in the borough from 15% to 25%. Known as the Community Infrastructure Levy, this money is distributed through the Village Planning Fund for spending on local projects.

HAM & PETERSHAM
Neighbourhood
Forum



HAM & PETERSHAM
Neighbourhood
Plan

REFERENDUM
Vote

Yes



No

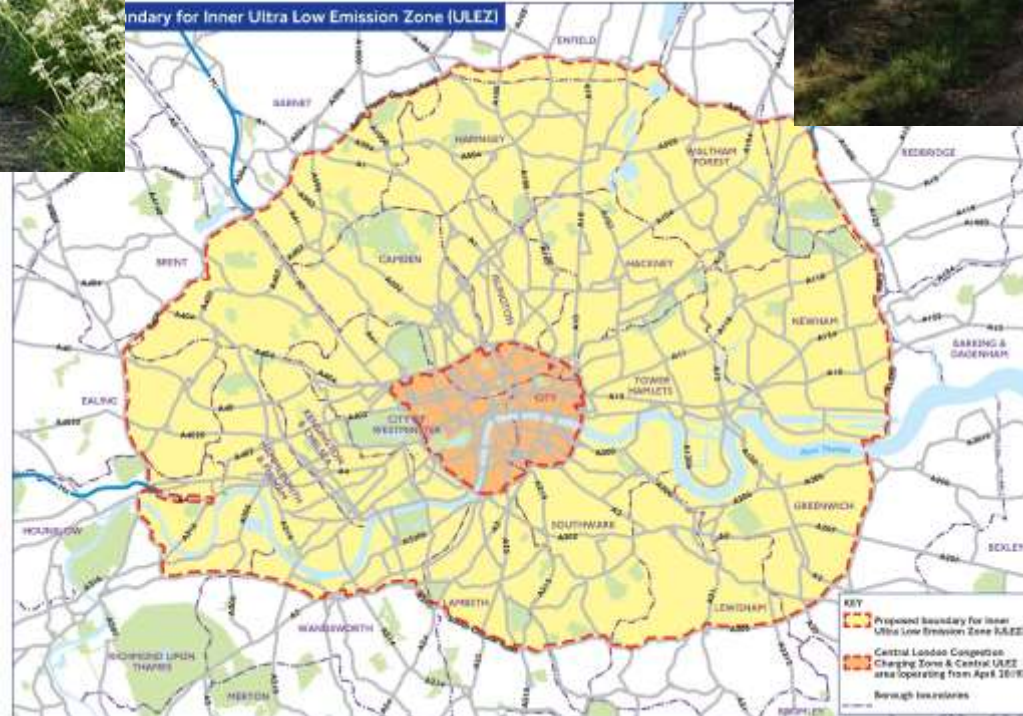




The quiet way is coming.
Cycling and 20mph consultations on their way.
Ultra Low Emission Zone.



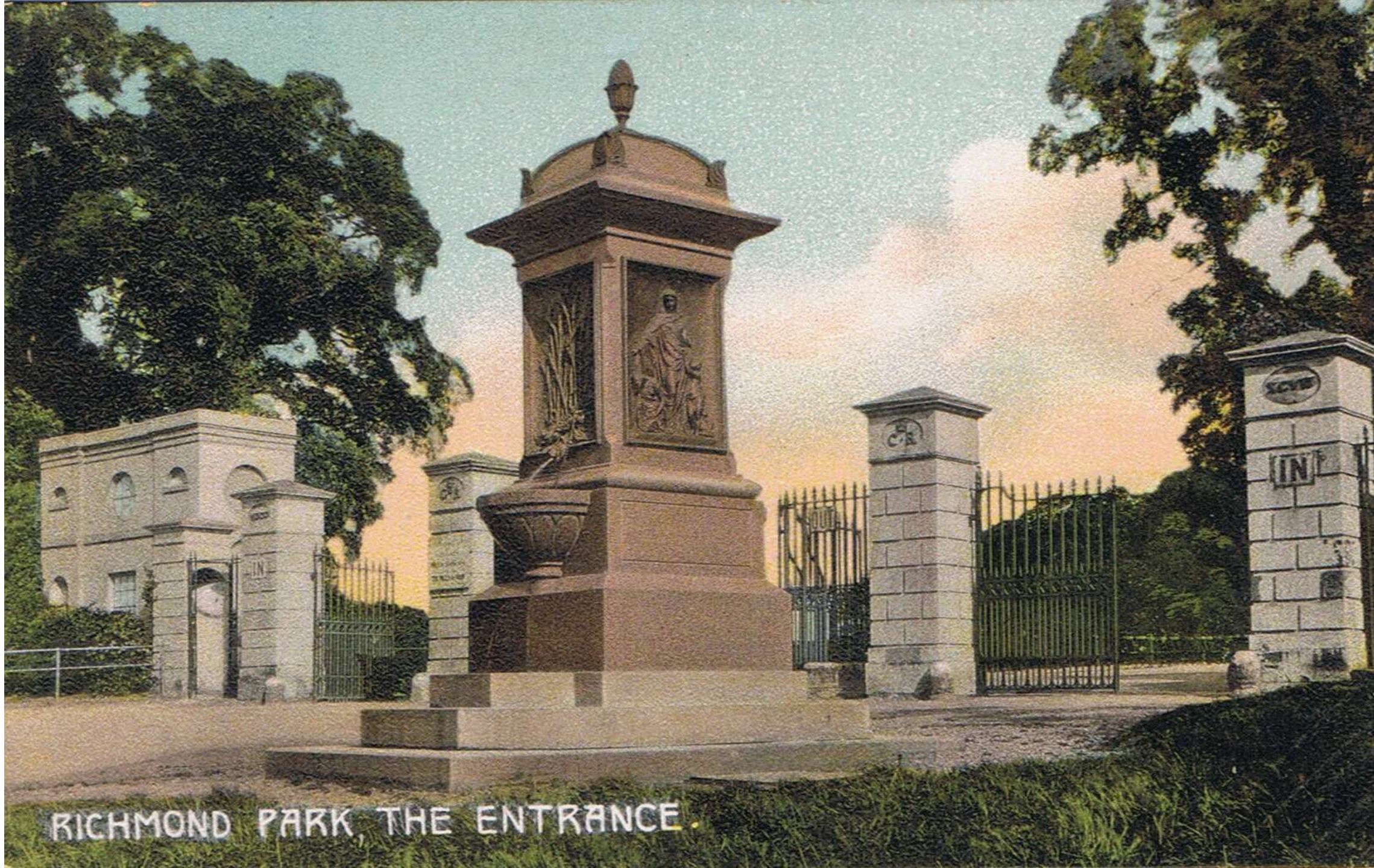
Boundary for Inner Ultra Low Emission Zone (ULEZ)





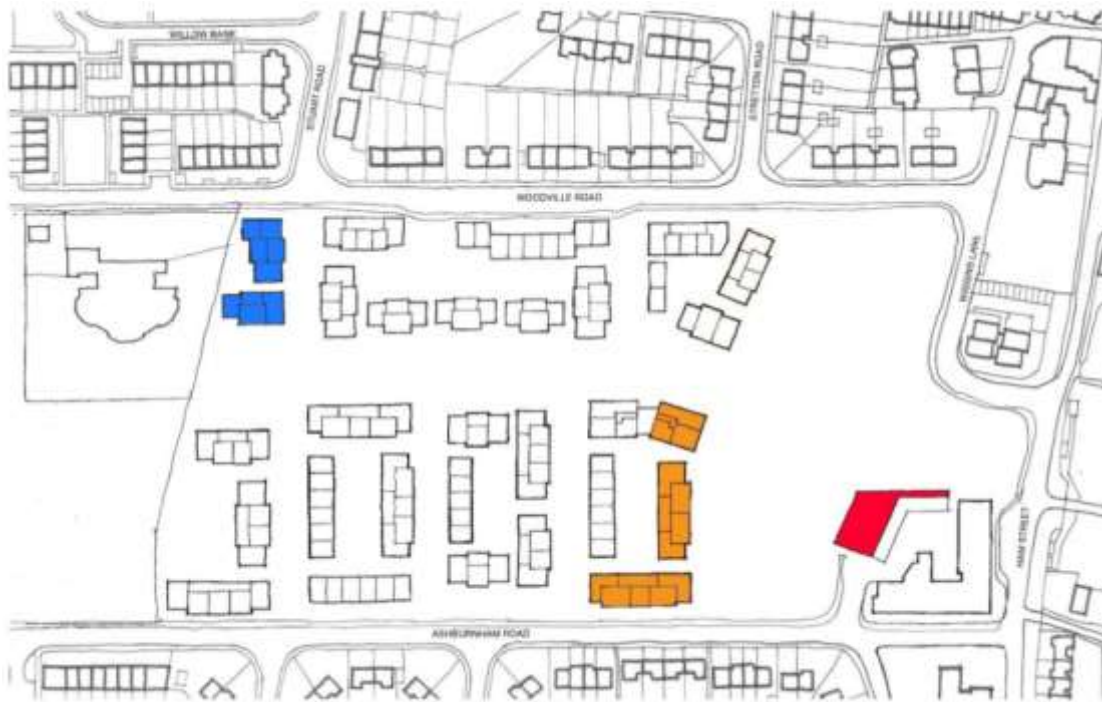
As a community we need to keep fighting graffiti and rubbish





RICHMOND PARK, THE ENTRANCE.

June 2018: Selection of developer to build the homes
August 2018: Architect selection
September 2018: Consultation on detailed design
December 2018: Planning submission
Spring 2019: Planning approval expected
Summer 2019: Commence work on site



Community Facilities location 1 ■ Community Facilities location 2 ■ Community Facilities location 3 ■

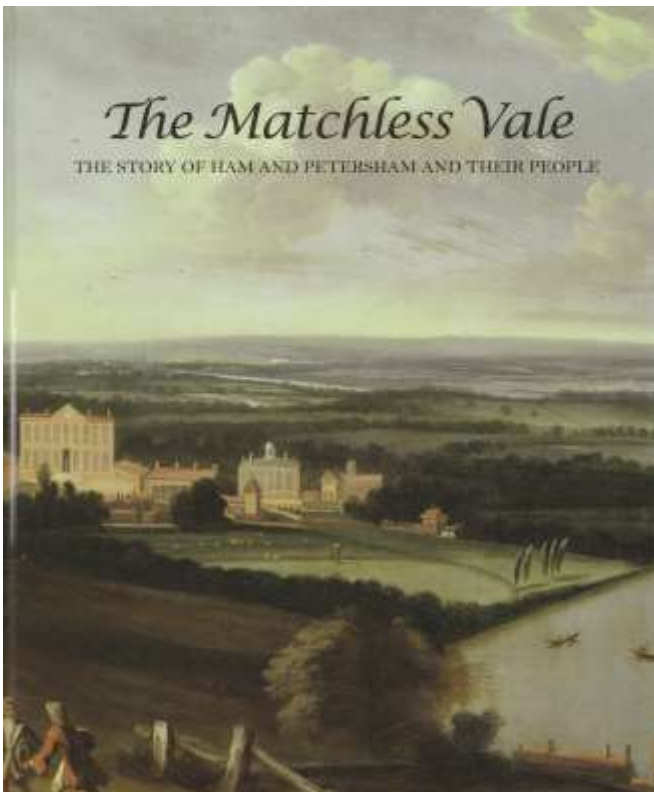
The concerns about height and density. 425 units in upto six storey blocks planned to replace 192 flats.
A strip of St. Richard's School playing field and the Woodville Centre to be added to the site.
Impact on other infrastructure.
Community facilities part of the development.
Talks with the NHS about Ham Clinic and a new GP surgery.
The Association wishes to see a development in keeping with the low rise, low density housing surrounding the current estate. Effect on the community concerns us.



Cassel Hospital



Cassel Hospital is a successful mental hospital helping people with personality disorders
New Sanctuary Garden from last year's Hampton Court Flower Show.
We have offered a grant to renovate the gates to enable public access.



Matchless Vale Reprint 2018

The Matchless Vale: The Story of Ham and Petersham And Their People

Vanessa Fison (author)

Alison Graham (designer, photographer)

David Yates (editor)

AVAILABLE END MAY £20





Petersham Open
Gardens
Petersham Meadows



Sunday 3rd June 2018
11am - 5pm

Ham & Petersham Association

Keeping Ham and Petersham Special

[JOIN OR RENEW MEMBERSHIP NOW](#)

What Is happening In Ham and Petersham?

There is always lots going on in our special area. To hear the very latest news please see our email bulletins in the News & Events section.

Annual General Meeting



We will be holding our AGM at 7.30pm on Wednesday 25th April at Thomas Aquinas Church Hall

Best Village in London



Royal Horticultural Society
Sharing the best in Gardening

We are already the official the best village in London and have been invited to compete to be the best Village in Britain. Here is what the London In Bloom judge said.

Great British Spring Clean

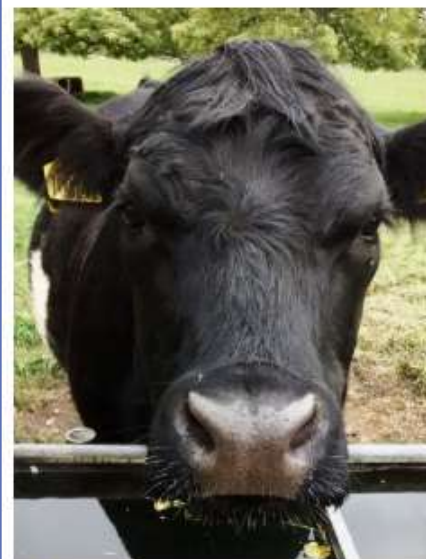


Please come and help get the area tidied after a long winter. Litter pickers and refreshments provided. Help keep Ham and Petersham special



What would you like to hear about at the AGM?

Our AGM is in a month's time on 25th April. We would like to know what members would like to hear about. We will cover lots of ground but if there is something you like to know more about please let us know. [Just email enquiries@hpa.org.uk](#) - It could be something that is bothering you, a suggestion for the area or just a question.



Say Hello To The Cows

After enjoying a winter away with [Sunny Wildlife Trust](#) the herd of 18 Belted Galloways will return to Petersham Meadows tomorrow, 27th March. We will need to make sure dogs are kept on a lead when crossing the meadows.



Hemthorpe Consultation

There is just a couple of days left of the Consultation on the expansion of Hemthorpe airport. Part of this relates to how the flight paths might change.

[Consultation](#)



Vote Richmond Park Video

Richmond Park, National Nature Reserve, presented by David Attenborough, is a finalist in the national Charity Film Awards 2018.

[See the film and vote](#)



Royal Horticultural Society
Sharing the best in Gardening

We Are a Britain In Bloom Finalists

We are already the Best Village in London Now Can We Win The Best Village in Britain in Bloom?

We are delighted that the Ham & Petersham Association have been invited to lead our first ever entrance to Britain in Bloom. This will mean lots of work to get our area to it's very best. If you would like to help email Chair@HamandPetersham.com



If you enjoy the Copse...

Please come along tomorrow morning. Warm yourself up and pretend Spring is on its way and help lay a new woodchip path in the Copse. Meet at Meadowlands Drive

Saturday 10th February 9.30-12

Bring Your Children To help

Russell School: The End Is In Sight

We were delighted to see the landscape plans and schedule to complete the building works. We were also pleased these plans were very similar to the ones originally proposed. We have asked for the lighting to be kept to a minimum in terms of light spill, height and duration. We have also asked for the site to be as green as possible with a generous area for the school allotment and the nature area that the HPA originally helped build. Securing the site from the Avenue, as was promised when planning was granted, is important.

We will continue to support the parents to get the green site their children deserve as quickly as possible.



New Cycle Path?

Please do have this last chance to participate in the consultation for the new Clear Way. This will affect major roads in Ham most notably Ham Gate Avenue where the cycle path there will be a widened off the road



St Andrew's Church Ham Common

Acid Grassland Improvement Project with LRP17

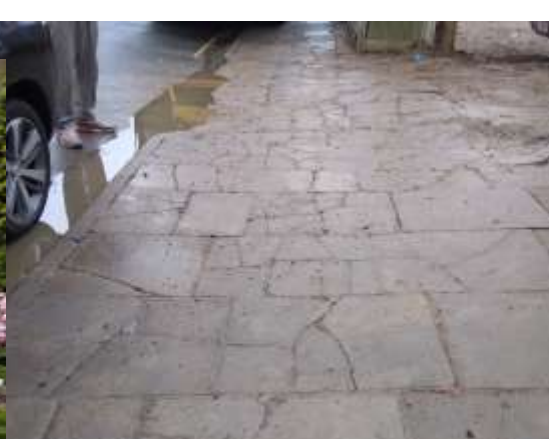
Join in, have fun, feel good!

10th June, 10am - 12pm



Ham & Petersham Association Party Saturday 9th June





- Ham Avenues GB
- The Great British Spring Clean GB
- Ham Pond and trees GB
- Latchmere Brook and Ham Common Woods Including Our Toads GB
- Bulb Planting and path laying GB
- Russell and Strathmore Schools, CM
- Preserving Our Green Spaces: Tiers of Planning Protection GB
- St Michael's Convent and Petersham Nursery GB
- Ham Parade and Market GB
- Ham Open Gardens RL

Forward

- Britain in Bloom Finalists, RL
- Ham and Petersham Neighbourhood Plan, BW
- Quiet way, cycling and path GB
- Fighting Graffiti, GB
- Duchess of Teck, GB
- Ham Close, GB
- Cassel Hospital Garden, DW
- Matchless Vale, DJ
- Petersham Open Gardens Petersham meadows, Jo
- New Ham & Petersham Association Website GB
- Summer Party 2018 GB